

easy. smart. forever.

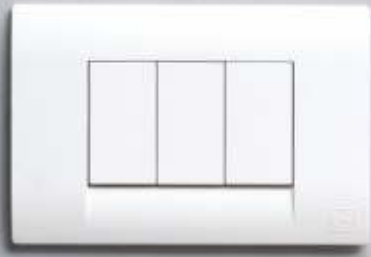
Honeywell



Blenze



by Honeywell



*When something goes beyond a necessity
When it becomes a statement in itself,
Something that you recognize yourself with
Something you relate to -
A lifestyle.*

*And you feel a sense of pride
Every time you look at it,
because there's nothing else like it
nor will there ever be.*



About Honeywell Environmental and Combustion Controls, India

Environmental and Combustion Controls (ECC), India, is part of Honeywell's global Automation and Control Solutions business.

ECC is a \$2.4 billion global business with installations in more than 150 million homes, 10 million buildings and a multitude of manufacturing plants around the world. ECC offers integrated product solutions for various residential, commercial and industrial applications ranging from HVAC Solutions, Water Controls, Wiring Devices and Cable Management, Circuit Protection Devices, LED and Lighting Controls, Building Control Solutions and Industrial Combustion Controls. As a part of its global operations, all ECC brands share the same commitment towards innovation, quality, safety and customer service. Brands that operate under ECC in India are MK, Trend, Alerton, Webs-AX™, Phoenix Controls and Maxon. ECC has over 9 sales offices across the country, two state-of-the-art manufacturing units in Chennai and Dehradun, and an extensive pan-India distribution network. With its 'Customer First' approach, ECC is committed to making life easy and convenient, safer and more secure, more comfortable and energy efficient, with its smart products and solutions.



by Honeywell

MK is one of the leading brands of electrical products in India. A pioneer in the field, with several innovations to its credit, MK has established a reputation for delivering highest standards in quality, safety and reliability. With over 6000 products in its portfolio, MK is known for Wiring Devices and Accessories, Cable Management, Circuit Protection Devices, and Datacom for domestic, commercial and industrial applications.

Blenze

Blenze is the next generation range of switches from MK that is crafted to blend with your interiors. Artfully embellished with a silky satin matte finish, Blenze comes in two colour shades.

Blenze is a smart-looking flat modular switch range. With the switch housed in slim 6.5mm front plate, the entire unit appears flushed on the wall and blends in with interior décor. To add to its benefits, this range is easy to install, absolutely safe to use, and future proofed forever with a wide range of electronic products. Blenze is India's first fully RoHS compliant range.

Flat Modular Switches

The Blenze switch is designed to flush on the same plane as that of the front plate in OFF position. The front plate itself being smart and slim, the entire unit appears flushed on the wall. Its asymmetrical shape, deep blended radii at the lower edge and a contrasting abutting edge at the top, complements the switch in both "ON" and "OFF" position, resulting in superior aesthetics.

Silky-Satin Matte Finish

Blenze front plates come in a silky satin matte finish, which provides an understated elegance and enhances the overall aesthetic appeal. Further, the smart and smooth texture makes them a pleasure to use, and easy to maintain.

Technology Modules

Blenze has a range of sophisticated electronic products to support New Age Living for ease of use, comfort and energy conservation.

Smart products, including PIR sensor, remote control, timer switch etc., are part of the range that helps save energy, provides additional convenience and safety.

Anti Single Pin Entry Shutters

MK, a brand that is obsessed with quality, also strives to make products that are safe and easy to use. The safety shutters in this range are superiorly engineered to prevent single pin entry for safety.

Secure Socket Engagement

The Blenze socket engagement is extremely secure and rigid, giving you a perfect, tight-fit contact. They are designed for absolute engagement with plugs, avoiding loose contacts and related hassles ensuring complete safety.

Anti Pull Snap

Safety cannot be stressed enough. The entire range is designed with an innovative APS (Anti Pull Snap) lock. APS resists any unintentional pulling out of accessories while in use. A smart and unique feature enabling safe and secure usage of plug and socket, the snap gets added strength when irregularly pulled from the front, making sure the module does not come out.

Easy to Install

All switch terminals in this range are V-shaped and have backed out and captive screws. Apart from this, other accessories come with terminal block, tool free connectors, anti-spread terminals, etc., making installation easy, reducing installation time and increasing efficiency of installation.

Front Loading & Removal, Universal Adaptability

The modules can be loaded or removed from the front, ensuring quick installation, which means the grid plate need not be unscrewed for maintenance resulting in minimal distortion. The Blenze range has been designed for universal adaptability. All these put together makes the installation faster and easier thus saving time and labour costs.

Sturdy Muscular Construction

The entire range is meticulously engineered for heavy build with scientifically placed re-enforcements and cross sectional ribs. The re-enforced cross sectional ribs impart extra strength, making it tough and robust, so that the products last forever.

Single Window Aperture

Blenze front plates are designed with single-window apertures for optimum space utilisation. This ensures utmost flexibility in configuration & reconfiguration without compromising on the aesthetics.

Precise Alignment

The entire range has a unique locking system - PIP (Plastic in Plastic). The smart in-built locking system ensures perfect alignment for locking of modules.

RoHS Compliant

And for all those out there who are concerned about the hazards that this marvel poses to the environment, the Blenze range is the first in the country to be fully RoHS (Restriction of Hazardous Substance) compliant and meets BIS Quality standards too.

Switches

The Blenze switches are completely flush with the front plate, when they are in 'off' condition making them appear flat on the wall. They have a shroudless rocker with positive action. The range is future proofed 10AX and is IP 20 rated, making it truly a next generation switch range. These switches have V-shaped angled terminals with backed out and captive screws. The switches are designed with RH base for easy installation. Blenze range of switches are engineered with ant ingress design which give complete protection from ant entry. The 32A DP switch is definitely the 'best in class'. It can carry heavy resistive & inductive loads up to 7.68 kW. Also, the lenses are textured, for better visibility of indicators. All this and more reaffirms MK's leadership in switch technology.

			<p>Elec. Spec. : Rated Voltage - 230V, Rated Current - 6AX, 10AX & 16AX, Nature of Supply - AC only, Terminal Capacity - 4 Sq mm</p> <p>Features : ♦ Flushes with the front plate in OFF condition ♦ Future proofed - 10 AX ♦ Shroud less designed rocker with positive action ♦ Two way switch with pad printing for visual differentiation ♦ Ant - Ingress Rocker ♦ Captive and backed out screws for faster installation ♦ LED based indicator for longevity ♦ Textured lens for better visibility ♦ Heavy and sturdy terminals for more effective terminations ♦ Complies to IS3854: 1997 ♦ Fully RoHS compliant product</p> <p>Finish : Silky Satin Matte</p> <p>Dimension : H - 45 mm, W - 25 mm - 1M, H - 45 mm, W - 50 mm - 2M</p> <p>Colours : Satin White / Charcoal Black</p>
DW501WHI 6 AX One Way Switch	DW502WHI 6 AX Two Way Switch	DW403WHI 10 AX One Way Switch with Indicator	
			
DW405WHI 10 AX Bell Push Switch	DW504WHI 2M Bell Push Switch	DW413WHI 16 AX One Way Switch with Indicator	

MINITRIP

		<p>Module : 1M</p> <p>Elec. Spec. : Rated Voltage - 240V, Rated Current - 16A / 25A, C type, No. of poles - Single Pole, Min. Voltage - 50V, Rated short circuit capacity - 1cn = 3KA</p> <p>Function : Suitable for Switching on 16A & 25A rated appliances</p> <p>Colours : Satin White / Charcoal Black</p> <p>Finish : Silky Satin Matte</p> <p>Application : For domestic, agriculture and industrial applications</p>
DW226WHI 16A Minitrip Switch	DW227WHI 25A Minitrip Switch	

32A DOUBLE POLE



DW224WHI
32A DP Switch

Module	: 2M
Elec. Spec.	: Rated Voltage - 230V, Rated Current - 32A, Nature of Supply - AC only, Terminal Capacity - 2.5 Sq.mm
Features	: ♦ The best in its class ♦ Capable of carrying heavy Resistive & Inductive Loads with a maximum load of 7.86kW ♦ Isolates phase & neutral whenever the load is cut-off from the mains ♦ Complies to IS3854:1997 ♦ Fully RoHS compliant product
Dimension	: H - 45 mm, W - 50 mm
Colours	: Satin White / Charcoal Black
Finish	: Silky Satin Matte

MOTOR STARTER



DW217BLK
25A AC Motor Starter

Module	: 3M
Elec. Spec.	: Rated Current - 16-25A, Rated Voltage - 250V, Nature of Supply - AC 50 / 60 Hz, Terminal Capacity - 6.0 Sq.mm
Features	: ♦ Thermal trip overload protection ♦ User settable current adjustment band (16-25A) ♦ Fully RoHS compliant product
Dimension	: H - 45 mm, W - 75 mm
Colours	: Satin White / Charcoal Black
Finish	: Silky Satin Matte

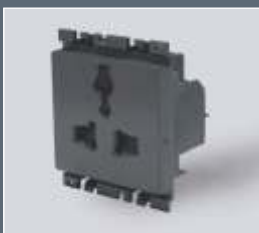
Sockets

Blenze sockets are engineered to ensure easy and absolute engagement to plug top. They have an enhanced safety feature of a smart anti single pin entry shutter. All sockets are rated to minimum 10A for future-proofing. The shutter design ensures that the earth pin of the plug is engaged first before Line and Neutral Pins in case of 3pin plug. All contact points are made of Phosphor Bronze material that are corrosion resistant ensuring long term reliability and avoid loss of electrical energy. All sockets are available in 1 module and 2 modules.



DW420WHI
10A 2/3 Pin Universal Socket

Module	: 2M
Elec. Spec.	: Rated Voltage - 250V, Rated Current - 10A, Nature of Supply - AC only, Terminal capacity - 1.5 Sq.mm
Features	: ♦ 10A 2/3 pin shutter socket is India's first fully compatible socket for both 4mm and 5mm dia pins ♦ 3 pin socket can take mobile charger too ♦ Safety shutters ♦ Contact terminals - Phosphor Bronze ♦ Designed to the requirements of IS1293 : 2005 ♦ Fully RoHS compliant product
Dimension	: H - 45 mm, W - 50 mm
Colours	: Satin White / Charcoal Black



DW426BLK
6/10/13A International Socket

Module	: 2M
Elec. Spec.	: Rated Voltage - 250V, Rated Current - 6/10/13A, Nature of Supply - AC only, Terminal capacity - 2.5 Sq.mm
Features	: ♦ Patented drop down safety shutters in international socket makes it probably the safest in its class which refuses single pin access to line and neutral contacts ♦ Truly international, compatible to plug tops of over 17 countries ♦ Inbuilt Safety shutters ♦ Contact terminals - Phosphor Bronze ♦ Fully RoHS compliant product
Dimension	: H - 45 mm, W - 50 mm
Colours	: Satin White / Charcoal Black



DW428WHI
10/25A Socket

Module : 2M

Elec. Spec. : Rated Voltage - 230V, Rated Current - 10/25A, Nature of Supply - AC only, Terminal capacity - 4 Sq.mm

Features : ♦ Ensures a perfect fit with any 3 pin plug tops ♦ Inbuilt safety shutters ♦ Contact terminals - Brass ♦ Designed to the requirements of IS 1293 : 2005 ♦ Fully RoHS compliant product

Dimension : H - 45 mm, W - 50 mm

Colours : Satin White / Charcoal Black



DW427BLK
One Module 2 Pin Charger Socket

Module : 1M

Elec. Spec. : Rated Voltage - 250V, Rated Current - 16A, Nature of Supply - AC only, Terminal capacity - 2.5 Sq.mm

Features : ♦ Suitable for flat pin plug and 4/5 mm dia 2 pin plug tops ♦ Optimum space utilisation ♦ Inbuilt safety shutters ♦ Contact terminals - Phosphor Bronze ♦ Fully RoHS compliant product

Dimension : H - 45 mm, W - 25 mm

Colours : Satin White / Charcoal Black

Dimmers, Regulators and Volume Controls

Blenze dimmers have a push on/off knob, for convenience of switching at any dimming-level and a full 400W power handling capability. Blenze regulators have standard five definite speeds and 'off'. The regulator has a unique knob with a unique SPEED-VIEW™. Also, it is completely hum free irrespective of the speed. Blenze volume control comes in 2M size.

REGULATOR



DW472WHI
Step Fan Speed Control 120W

Module : 2M

Elec. Spec. : Rated Voltage - 230V, Rated Power - 120W Max, Nature of Supply - AC only, Terminal Capacity - 2.5 Sq.mm on pre marked screw-connector Number of steps - 5+OFF

Features : ♦ Five definite speeds + OFF ♦ Unique knob with SPEED - VIEW™ ♦ Completely hum free irrespective of speed ♦ Uniform speed increments across steps ♦ Ease of installation with pre-marked screw-connector ♦ Fully RoHS compliant product

Dimension : H - 45 mm, W - 50 mm

Colours : Satin White / Charcoal Black

DIMMER



DW480WHI
Push ON/OFF 400 W Dimmer

Module : 2M

Elec. Spec. : Rated Voltage - 230V, Rated Power - 400W, Nature of Supply - AC only, Type of load - Incandescent lamp only, Terminal capacity - 2.5 Sq mm on pre marked screw-connector

Features : ♦ Push ON/OFF knob ♦ Convenience of switching at any dimming-level ♦ Ease of installation with pre-marked screw-connector ♦ Full 400W power handling capability ♦ Linear brightness control ♦ Fully RoHS compliant product

Dimension : H - 45 mm, W - 50 mm

Colours : Satin White / Charcoal Black

VOLUME CONTROL



DW603WHI
Volume Control

Module : 2M

Elec. Spec. : Rated - 100 Ohms 3W LIN w/w, Amplifier audio input (max) - 17V - RMS (35W RMS in 8 Ohms), Terminal capacities - flexible leads with connectors

Features : ♦ Linear variation of audio output ♦ Ease of installation with pre-marked screw-connector ♦ Fully RoHS compliant product

Dimension : H - 45 mm, W - 50 mm

Colours : Satin White / Charcoal Black

Communication Range

Blenze communication range consists of TV coaxial, computer jack, AV socket and telephone jack. The entire range is designed for maximum data & voice transfer efficiency. Features in the range like angled connectors in TV coaxial, tool free connectors in computer jack and sliding shutters in telephone jack are designed to deliver minimal signal loss, ease of installation and low maintenance.

TELEPHONE JACK



DW492WHI
Two Line RJ 11

Module	: 1M
Elec. Spec.	: No of contacts - 4, Category - 3, Voltage - 33V r.m.s / 70V DC, Speed of transmission - 16 MHz 100 Ohms UTP cable size, Rate of transmission - 10 Mbps, Compliance of standards - FCC Part 68, ANSI/EIA/TIA-568 TIA TSB - 36, TIA TSB-40, Attenuation - 0.4db
Features	: ♦ 2 Lines can be connected simultaneously ♦ Anti-spread (Strands) Screw terminals for easy installation ♦ Spring loaded sliding shutter that protect from dust ♦ 50µ" Gold plated leads for better data transfer efficiency ♦ Fully RoHS compliant product
Dimension	: H - 45 mm, W - 25 mm
Colours	: Satin White / Charcoal Black

COMPUTER JACK



DW493WHI
CAT 6 RJ 45

Module	: 1M
Elec. Spec.	: No of contacts - 8, Category - Cat 6, Speed of transmission - 250 MHz 100 Ohms UTP cable size, Rate of transmission - 1 GB/sec, Compliance of standards - FCC Part 68, Insulation resistance - >500 M Ohms, Current rating - 150 VAC, 2 A, Dielectric withstand voltage - 1000V, 60 Hz/1min, Contact resistance - <20 million Ohm, DC Resistance - 0.1 Ohm
Features	: ♦ CAT 6 compliant RJ45 ♦ Spring loaded sliding shutter that protect from dust ♦ Underwriters Laboratories (UL) approved ♦ Tool free connecting terminals ♦ 50µ" Gold plated leads for better data transfer efficiency ♦ Fully RoHS compliant product
Dimension	: H - 45 mm, W - 25 mm
Colours	: Satin White / Charcoal Black

AV SOCKET



DW452WHI
AV Socket

Module	: 1M
Features	: ♦ Color identification for jack. Red for right audio, white for left audio and yellow for video ♦ Nickel plated brass jacks for better connectivity ♦ PCB mounted terminal block for easy installation ♦ Fully RoHS compliant product
Dimension	: H - 45 mm, W - 23.3 mm
Colours	: Satin White / Charcoal Black

TV SOCKET



DW451BLK
TV Socket

Module	: 1M
Features	: ♦ Angled connector holding ♦ Silver plated for minimal signal loss ♦ Screw terminals for easy installation ♦ Fully RoHS compliant product
Dimension	: H - 45 mm, W - 25 mm
Colours	: Satin White / Charcoal Black

Technology Modules

Blenze Technology range comes with smart products like timer switch, PIR sensor, foot lamp and remote switch. This brilliant range comes with futuristic features delivering ease of use, user convenience, safety and customised solutions. Features such as remote switch with in-built memories that retain status in the event of power cuts, PIR sensor that responds to human body movement and infrared controlled remote switch make the entire range exceptional. Blenze brings in the best of technology in these products to offer a truly safe experience.

PIR SENSOR



DW220WHI
PIR Sensor

Module	: 2M
Elec. Spec.	: Rated Voltage : 220-240V AC 50/60Hz, Rated Current : 10A/6AX, Coverage Distance: 7-10m, Coverage Angle: 160° Horizontal, IP Rating: IP4X
Features	: ♦ Automatic lighting control based on movement detection and ambient light ♦ Tri-state operation ON-OFF-AUTO with a slide switch ♦ Adjustable OFF delay control from 30 seconds to 15 minutes ♦ Wide range preset ambient light level (5-300 Lux) to ON/OFF ♦ Up to 7-10 meters sensing distance ♦ 160° horizontal coverage ♦ Distinctive OFF-HINT-BEEP with external control switch ♦ Ingress protection (IP4X) rated installation ♦ Unit can control Incandescent and Fluorescent lamp loads ♦ The unit can be adjusted to operate over wide range of preset ambient light level from 5 Lux to 300 Lux ♦ Manual override is possible ♦ Fully RoHS compliant product
Dimension	: H - 45 mm, W - 50 mm Colours : Satin White / Charcoal Black

TIMER SWITCH



DW219BLK
Timer Switch

Module	: 3M
Elec. Spec.	: Rated Current : 6A Resistive, 1A Inductive, Rated Voltage: 170 - 250V, 60hz, Nature of Supply - AC only, Battery - 1.5V DC NiMH with 100hrs backup
Features	: ♦ Automatic ON/OFF control based on preset timings ♦ 24hrs x 7 days programmable timer ♦ Repeatable 8 programmable channels ♦ Adjustable ON/OFF delay control from minute to day ♦ 15 user friendly DAY settings ♦ Single push TRI-STATE operation (ON-OFF-AUTO) ♦ LCD indicator of ON/OFF delay for switching ♦ Retains status during power loss ♦ Recessed RESET to avoid accidental usage ♦ Fully RoHS compliant product
Dimension	: H - 45 mm, W - 75 mm Colours : Satin White / Charcoal Black

DOWN LIGHT / FOOT LAMP



DW530WHI
Down Light

Module	: 2M
Elec. Spec.	: Rated Voltage - 230V, Nature of Supply - AC only, Terminal capacities - 2.5 Sq.mm
Features	: ♦ Long life white colour LED based illumination ♦ Maintenance free LED lamps which never need to be changed ♦ Power consumption less than 1W ♦ Textured lens for uniform dispersion of light ♦ Operates even at low voltages ♦ Easy installation with screw terminations ♦ Fully RoHS compliant product
Dimension	: H - 45 mm, W - 50 mm Colours : Satin White / Charcoal Black

REMOTE SWITCH



DW606WHI
Remote Switch

Module	: 4M (Mono block)
Elec. Spec.	: Rated Current : Switch - 5A Resistive/ 2.5A Inductive per switch, Fan - 100W(max) Rated Voltage: 140- 320V, Number of Channels: 4 Nature of Supply - AC only, Remote control: Infrared (line of sight), Remote range: 30 feet @ operating angle 120° Remote Battery: CR2025, Operating temperature: 0-55°C
Features	: ♦ Operates from wall-unit and with a full-functional remote handset ♦ Built-in memory retains last status of load in case of power failure or when switched ON ♦ Sensitive infrared remote control operates from 30 feet distance ♦ Press S1/S2/S3 to turn individual loads ON/OFF, corresponding keys will glow when they are ON ♦ Press '⊕' to ON/OFF the fan, use '▲, ▼' to increase and decrease the fan speed ♦ Pressing S1/S2/S3 for more than 2 sec will turn OFF the entire system (wall unit) ♦ Avoid using more than one remote in same room, if unavoidable keep a distance of 10 feet and in the same line of the remote handset ♦ Fully RoHS compliant product
Colours	: Satin White

ASSEMBLED IT MODULE



DW109WHI-A



DW109WHI-B

Module	: 9M
Features	: ♦ Front Plate with Satin finish ♦ Blends with all kinds of interiors echoing latest trends ♦ Screw retention pads ♦ Angular clearance built into design to facilitate easy removal of Snap On ♦ Snap On facilitates protection against paint spills and other installation related abuses ♦ Multi directional flexible alignment in the grid covers for short comings in box installations ♦ Structurally stable fixing screw feature in the grid ♦ Resistant to ageing and to humidity ♦ Resistant to heat
Dimension	: LxBxD : 281.70 mm x 88 mm x 31.2 mm
DW 109 WHI - A	: 9M front plate assembled with 4 nos. of 10 Amps sockets & 1 no. of 16 Amps indicator switch of the Blenze range of products
DW 109 WHI - B	: 9M front plate assembled with 4 nos. of international socket and 1 no. of 16 Amps indicator switch of the Blenze range of products
Application	: Houses, Hotels, Offices, Hospitals and Similar installations

Hospitality Range

Blenze hospitality range is a smart energy saving cum room management system specially designed for the hotel industry. It saves energy without compromising the comfort of the guest. The switches are soft-touch and backlit, for better visibility. The hospitality range comprises of energy key tag with service panel, corridor panel, digital thermostat and bedside panel. Feature packed and with superior aesthetics, Blenze range of hospitality products are in complete synergy with the hospitality industry requirements. The range is convenient, safe and efficient.

ENERGY KEY TAG



DW601WHI*
Energy Key Switch with delay

Module	: 3M
Features	: ♦ Power rating: 30A ♦ Infrared key card holder ♦ Time Delay - 30 Sec ♦ Can be activated by 1mm swipe door lock cards ♦ Blue color LED to indicate card slot ♦ Micro controller based advanced system ♦ Integrated with control unit by RJ45 connector through Cat 5e/Cat6 Cable ♦ Fully RoHS compliant product
Dimension	: H - 45 mm, W - 75 mm
Includes	: Energy Key Tag with control unit only Colours : Satin White
*Delivery 8 weeks after placing order	

DND CONSOLE



DW602WHI*
DND Console

Module	: 3M
Features	: ♦ Bell Push is a membrane operated switch ♦ Do Not Disturb indicator in Red LED ♦ Make MyRoom indicator in Green LED ♦ Laundry indicator in Yellow LED ♦ All service functions are backlit with LEDs passed through diffusers for better visibility ♦ Micro controller based advanced system ♦ Integrated with control unit by RJ45 connector through Cat 5e/Cat6 Cable ♦ Fully RoHS compliant product
Dimension	: H - 45 mm, W - 75 mm
Includes	: Energy Key Tag, Service Panel with Control Unit Colours : Satin White
*Delivery 8 weeks after placing order	

DIGITAL THERMOSTAT



DW604WHI*
Digital Thermostat

Module	: 3M
Feature	: ♦ Digital display screen ♦ Micro controller based advanced system ♦ Temp Range – 18°C to 28°C ♦ 4 mode AC fan speed – Low, Medium, High and Off ♦ Automatic backup facility for Programmed values ♦ Integrated with control unit by RJ45 connector through Cat 5e/Cat6 Cable ♦ Fully RoHS compliant product
Dimension	: H - 45 mm, W - 75 mm
Includes	: Energy Key Tag, Service Panel and Digital Thermostat with Control Unit
Colour	: Satin White
*Delivery 8 weeks after placing order	

VOLUME CONTROL



DW603WHI
Volume Control

Module	: 2M
Elec. Spec.	: Rated - 100 Ohms 3W LIN w/w, Amplifier audio input (max) - 17V - RMS (35W RMS in 8 Ohms) Terminal capacities - flexible leads with connectors
Features	: ♦ Linear variation of audio output ♦ Ease of installation with pre-marked screw-connector ♦ Fully RoHS compliant product
Dimension	: H - 45 mm, W - 50 mm
Colours	: Satin White / Charcoal Black

BED SIDE PANEL



DW605WHI*
Bed Side Panel

Module	: Table top
Feature	: ♦ Bedside Panel System is a Microcontroller based room management system ♦ Membrane operated switch can control the light points in the room ♦ Stand Bed side Panel will have the following control points ♦ 8 membrane switches for light control ♦ 4 step fan speed controller for centralised AC ♦ One Master Switch ♦ Digital clock with 6 country time option ♦ Integrated with control unit by RJ45 connector through Cat 5e/Cat6 Cable ♦ Infrared key tag holder with service switches and corridor panels with bell switch and service indicators ♦ Fully RoHS compliant product
Colour	: Satin White
Includes	: Bedside Panel, Energy Key Tag, Service Panel with Control Unit
*Delivery 8 weeks after placing order	

SHAVER SOCKET



DW529WHI
Shaver Socket with Transformer

Module	: 4M (Mono block)
Elec. Spec.	: Input Voltage - 230V, Output voltage - 115V/230V, Output Power - 15VA (Max) Shaver only, Nature of Supply - AC only, Terminal capacities - 4 Sq.mm
Features	: ♦ Accommodates internationally used 2 pin flat pin plugs ♦ In-built Isolation transformer & safety overload protection with reset feature ♦ Automatic switching-ON when plug is inserted, Switches OFF when plug is removed ♦ Indicator provided on front panel to show power-ON status ♦ Safety overload protection built with 30 - 60 sec reset ♦ Safety shutters are standard, along with the build to function under most challenging environments ♦ Fully RoHS compliant product
Dimension	: H - 45 mm, W - 100 mm
Colours	: Satin White / Charcoal Black

Front Plates

Features

- ♦ Two plate system
- ♦ Grids with muscular design
- ♦ Reinforced cross sectional stress design aligns with scientifically placed ribs
- ♦ The front plate has a provision to overcome shortfalls in installation
- ♦ Higher module grids are metal reinforced to prevent buckling
- ♦ 15° leverage angle for easy removal
- ♦ Front plate with a break-off pad for screw retention
- ♦ Even on an uneven wall surface, where the grid is put on extreme stress conditions, the front plates with APS (Anti - Pull Snap feature) stay engaged
- ♦ Single window aperture eliminates dust accumulation on front plates
- ♦ Break off pads to hold the screws
- ♦ Modules of 1,2,3,4,6,8, 8 Square, 9, 12 and 18 are available in Black & White colours

FRONT PLATE SELECTION CHART



MODULE		1M	2M	3M	4M	6M	8M	8M Square	9M	12M	18M
Dimensions (mm)	W X H	97 x 88	107 x 88	132 x 88	157 x 88	222 x 88	257 x 88	157 x 153	281 x 88	222 x 153	219 x 215
	Fixing Centre	62	62	88	120	196	213	H-120, V-60	H -158, V - 67	H-196, V-65	H-194, V-136
White		DW101WHI	DW102WHI	DW103WHI	DW104WHI	DW106WHI	DW108WHI	DW108VWHI	DW109WHI	DW112WHI	DW118WHI
Charcoal Black		DW101BLK	DW102BLK	DW103BLK	DW104BLK	DW106BLK	DW108BLK	DW108VBLK	DW109BLK	DW112BLK	DW118BLK

METAL BOX

The Blenze range of metal boxes are fully RoHS compliant. The metal boxes(4M onwards) are made of 1mm pre-galvanised steel. All metal boxes are corrosion resistant for longevity. New metal boxes are designed with improved lugs for easy and perfect alignment. Lugs are covered with PVC caps to prevent dust entry.

METAL BOX



DW903
3Module Metal Box



DW909
9Module Metal Box

DUMMY PLATE

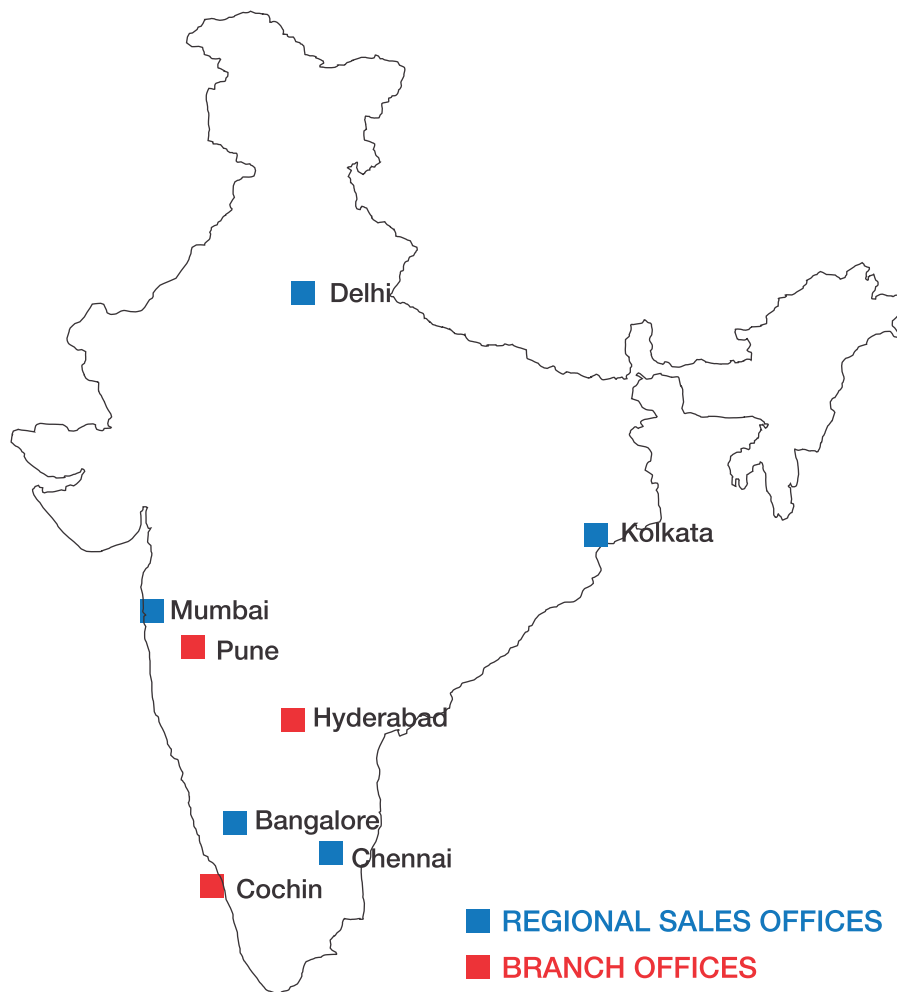


DW441BLK
1Module Dummy Plate

METAL BOX SELECTION CHART



MODULE		1M	3M	4M	6M	8M	8M Square	9M	12M	18M	
Metal Box Dimensions (mm)	W X H X D	73 x 70 x 50	98 x 72 x 51	132 x 70 x 51	208 x 70 x 61	228 x 76 x 61	133 x 133 x 50	245 x 77 x 60	208 x 139 x 61	210 x 211 x 60	
	Fixing Centre	60	88	121	197	H-158, V-67	H-120, V-60	H-158, V-67	H-196, V-65	198	
Metal Box Code		DW901	DW903	DW904	DW906	DW908	DW908V	DW909	DW912	26064	
White		DW101WHI	DW102WHI	DW103WHI	DW104WHI	DW106WHI	DW108WHI	DW108VWHI	DW109WHI	DW112WHI	DW118WHI
Charcoal Black		DW101BLK	DW102BLK	DW103BLK	DW104BLK	DW106BLK	DW108BLK	DW108VBLK	DW109BLK	DW112BLK	DW118BLK



Honeywell Environmental and Combustion Controls

Honeywell Electrical Devices and Systems India Limited

Chennai: 3rd & 4th Floor, 57, 59, 61 & 63 Dowlath Towers, Taylors Road, Kilpauk, Chennai - 600 010, India
Tel: +91-44-66085600 **E-mail:** eccteamindia@honeywell.com; eccchennai@honeywell.com **Website:** www.honeywell.com

Honeywell Automation India Limited

Pune: Plot No. 56/57, Hadapsar Industrial Estate, Pune - 411 013, India
Tel: +91-20-66039400 **Fax:** +91-20-66039800 **E-mail:** eccpune@honeywell.com

BANGALORE

3rd Floor, Chambers @ Mantri
 Municipal No. 10
 Richmond Road
 Bangalore - 560 025
Tel: +91-80-67124120/21/22/23
E-mail: eccbangalore@honeywell.com

BARODA

2nd Floor, Startrek
 Opp. Rajlakshmi Complex
 Old Padra Road, Baroda - 390 005
Tel: +91-265-6699600
Fax: +91-265-6699610
E-mail: eccbaroda@honeywell.com

COCHIN

41/2553, 2-A 2nd Floor, Metro Palace
 Opp. Town Rail Way Station
 Cochin - 682 018
Tel: +91-484-2394379/4044830
Fax: +91-484-2394732
E-mail: ecckochi@honeywell.com

GURGAON

Unitech Trade Center
 5th Floor, Sector 43, Block C
 Sushant Lok, Phase 1, Gurgaon - 122 022
Tel: +91-124-4975050
Fax: +91-124-6715014
E-mail: eccdelhi@honeywell.com

HYDERABAD

8-2-418, Krishnama House
 3rd Floor, Road No. 7
 Banjara Hills
 Hyderabad - 500 034
Tel: +91-40-66030900/70
Fax: +91-40-66030971
E-mail: ecchyderabad@honeywell.com

KOLKATA

Srijan Techpark
 8th Floor, DN-52
 Salt Lake, Sector-V
 Kolkata - 700 091
Tel: +91-33-66283693/94
Fax: +91-33-66283701
E-mail: ecckolkata@honeywell.com

MUMBAI

Eco-elite Building, 2nd Floor
 Marol Maroshi Road, Marol
 Next to Zakaria Industrial Estate
 Andheri (E), Mumbai - 400 059
Tel: +91-22-67650680/81
Fax: +91-22-67650682
E-mail: eccmumbai@honeywell.com

Customer Care Number - **1800 103 3848**

Honeywell