



Floor Mounting Outdoor Panel - IP55



Empty Enclosure IP-65 outdoor

125A Socket IP67



CEE Type Industrial Angled Plug



CEE Type Industrial Plug IP67



CEE Type Industrial Interlocked Socket



Twilight Switch



Presence Sensor

Motion Sensor with Spotlight

Motion Sensor



Floor / Wall Mounting Outdoor Panel IP66



Digital Time Switch

Price List

w.e.f 1st Nov 2020





CAPE manufactures LT Distribution Panel using Glass Fibre Reinforced (GRP) Enclosures for Industrial and Outdoor application. **CAPE** outdoor panel used by various industries all over India. These Panels are available upto IP66 with wall mounting / floor mounting facility. In addition customized high quality enclosures and components from reputed European manufacturers marketed by CAPE are used by various Industries and OEM's / Manufacturers

- Combiner Box and Array Junction Boxes (AJB) for Solar
- MCCB and MCB Distribution boards upto 800 Amps Incoming
- Industrial CEE type Socket outlet DB's for Outdoor Application / Construction Sites
- Local Control Stations (LCS)
- Feeder Pillar / Street Light control panels

We are the Sole Business partner of the following European manufacturers Providing high quality solution to customers in Indian Market

- M/s Gunther Spelsberg GmbH + Co.KG, Germany
- M/s Theben AG, Germany
- M/s PC Electric GesmbH, Austria
- M/s Uriarte Safybox, Spain



Model	Description	Dimension in mm (L x B x H)	With Terminals		Without Terminals	
			Part No.	Price (Rs)	Part No.	Price (Rs)

Junction Box - IP65 - Thermoplastic Polystyrene

Abox 025	2.5 Sqmm	80 x 80 x 52	802 407 01	500	802 907 01	335
Abox 040	4 Sqmm	93 x 93 x 55	804 407 01	565	804 907 01	400
Abox 060	6 Sqmm	110 x 110 x 67	806 407 01	1340	806 907 01	835
Abox 100	10 Sqmm	140 x 140 x 79	CJB007PS	1665	810 910 01	925
TK PS 1818 - 11 m	16 Sqmm	182 x 180 x 111	CJB008PS	2425	105 907 01	1525
TK PS 2518 - 11 m	25/35 Sqmm	254 x 180 x 111	CJB009PS	3050	105 908 01	1830

Junction Box - IP65 for Outdoor Installation - Thermoplastic Polycarbonate

Abox i 025	2.5 Sqmm	80 x 80 x 52	490 402 01	685	490 902 01	530
Abox i 040	4 Sqmm	93 x 93 x 55	490 404 01	770	490 904 01	645
Abox i 060	6 Sqmm	110 x 110 x 67	490 406 01	1600	490 906 01	995
Abox i 100	10 Sqmm	140 x 140 x 79	CJB007PC	2165	490 910 01	1340
TK PC 1818 - 11 m	16 Sqmm	182 x 180 x 111	CJB008PC	3225	127 907 40	2320
TK PC 2518 - 11 m	25/35 Sqmm	254 x 180 x 111	CJB009PC	3925	127 908 40	2600

Junction Box - IP55 - Thermoplastic

i 12 L	2.5 Sqmm	85 x 85 x 37			332 912 01	105
i 16 L	2.5 Sqmm	130 x 85 x 37			333 916 01	230
HP 070	2.5 Sqmm	75 x 75 x 42			320 970 01	225
HP 080	2.5 Sqmm	85 x 85 x 42			322 980 01	285
HP 090	4 Sqmm	90 x 90 x 45			325 990 01	365

MCB Distribution Board - IP65 - Thermoplastic Polystyrene with PE & N Terminals

Model	Description	Dimension in mm (L x B x H)	Part No.	Price (Rs)
Ak 03	3 Module	100 x 150 x 96	735 403 01	1965
Ak 05	5 Module	125 x 200 x 122	735 405 01	2550
Ak 09	9 Module	200 x 200 x 122	735 409 01	3035
Ak 12	12 Module	250 x 200 x 122	735 412 01	3505
Ak 24	24 Module	250 x 370 x 122	735 424 01	6715
Ak 14	14 Module	300 x 300 x 142	735 414 01	9270
Ak 28	28 Module	300 x 450 x 142	735 428 01	13515
Ak 42	42 Module	300 x 600 x 142	735 442 01	UR
Ak 56	56 Module	300 x 750 x 142	735 456 01	UR
Ak 70	70 Module	300 x 900 x 142	735 470 01	UR

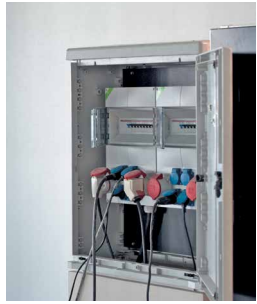
Model	Description	Dimension in mm (L x B x H)	Part No.	Price (Rs)
-------	-------------	----------------------------------	----------	------------

MCB Distribution Board - IP65 for Outdoor Installation - Thermoplastic Polycarbonate with PE & N Terminals				
Aki 03	3 Module	100 x 150 x 96	736 403 01	2365
Aki 05	5 Module	125 x 200 x 122	736 405 01	3120
Aki 09	9 Module	200 x 200 x 122	736 409 01	3645
Aki 12	12 Module	250 x 200 x 122	736 412 01	5150
Aki 24	24 Module	370 x 250 x 122	736 424 01	8365
Aki 14	14 Module	300 x 300 x 142	736 414 01	UR
Aki 28	28 Module	450 x 300 x 142	736 428 01	UR

MCB Distribution Board - IP65 for Outdoor Installation - ThermoPlastic ABS without PE & N Terminals				
3902-T	3 Module	100 x 170 x 105	3902-T	1520
3904-T	4 Module	141 x 217 x 105	3904-T	2190
3908-T	8 Module	235 x 217 x 105	3908-T	2460
3912-T	12 Module	307 x 217 x 105	3912-T	3015

TK Series Empty Enclosure - ThermoPlastic						
Model	Dimension in mm (L x B x H)	Price (Rs) - Polystyrene Indoor		Price (Rs) - Polycarbonate Outdoor		
		Opaque Lid	Transparent Lid	Opaque Lid	Transparent Lid	
TK 77 - 8	65 x 65 x 81	730	UR	UR	UR	
TK 99 - 8	94 x 94 x 81	820	UR	UR	UR	
TK 1309 - 8	130 x 94 x 81	920	UR	1410	UR	
TK 1313 - 10	130 x 130 x 99	1185	UR	1815	UR	
TK 1811 - 11	180 x 110 x 111	1185	UR	2030	UR	
TK 1818 - 11	182 x 180 x 111	1525	2145	2320	2330	
TK 2518 - 11	254 x 180 x 111	1830	2230	2600	2865	
TK 3625 - 11	361 x 254 x 111	3535	5025	4225	5525	
TK 3625 - 16	361 x 254 x 165	4575	UR	UR	UR	

Accessories		
Description	Part No.	Price (Rs)
IP65 AK Combi Set	79100101	640
IP66 M20 Combi Set	19202001	325
IP66 M25 Combi Set	19202501	465
IP66 M32 Combi Set	19203201	480
ASS-GRO - AK Hinge Set	19000501	725



Model	Dimension in mm (L x B x H)	Part No. (With Opaque Lid)	Price (Rs)	Part No. (with Transparent Lid)	Price (Rs)
-------	--------------------------------	----------------------------------	------------	---------------------------------------	------------



Empty Enclosure - IP65 - Thermoplastic Polystyrene - IK07

AkL 1	300 x 150 x 132	740 401 01	4025	744 001 01	4300
AkL 2	300 x 300 x 132	740 402 01	4985	744 002 01	5085
AkL 3	300 x 450 x 132	740 403 01	6345	744 003 01	9765
AkL 4	300 x 600 x 132	740 404 01	8665	744 004 01	14610
AkL 2 HighLid	300 x 300 x 210	742 902 01	7670	746 902 01	10550
AkL 3 HighLid	300 x 450 x 210	742 903 01	10210	746 903 01	UR
AkL 4 HighLid	300 x 600 x 210	742 904 01	12940	746 904 01	UR



Empty Enclosure - IP65 for Outdoor Installation - Thermoplastic Polycarbonate - IK08

Aki 1	300 x 150 x 132	741 401 01	3600	745 001 01	3600
Aki 2	300 x 300 x 132	741 402 01	5775	745 002 01	5775
Aki 3	300 x 450 x 132	741 403 01	8045	745 003 01	8045
Aki 4	300 x 600 x 132	741 404 01	10315	745 004 01	10315
Aki 2 HighLid	300 x 300 x 210	743 902 01	7220	747 902 01	7220
Aki 3 HighLid	300 x 450 x 210	743 903 01	10110	747 903 01	10110
Aki 4 HighLid	300 x 600 x 210	743 904 01	12170	747 904 01	12170



Empty Enclosure - IP65 for Outdoor Installation - Thermoplastic ABS - IK08

3955	175 x 330 x 130	3955	3180		
3956	330 x 330 x 130	3956	4025		
3954	330 x 506 x 130	3954	4635		



Glass Fiber Reinforced Polyester Enclosure - IP66 IK10 - Outdoor

CA 1515	135 x 135 x 130	CA 1515s	2580	CA 1515	2580
CA 215	180 x 135 x 130	CA 215 s	2905	CA 215	2905
CA 220	180 x 180 x 130	CA 220 s	3145	CA 220	3145
CA 315	270 x 135 x 130	CA 315 s	3300	CA 315	3300
CA 32	270 x 180 x 170	CA 32 s	4245	CA 32	4245
CA 33	270 x 270 x 170	CA 33 s	5120	CA 33	5120
CA 42	360 x 180 x 170	CA 42 s	4605	CA 42	4605
CA 43	360 x 270 x 170	CA 43 s	5975	CA 43	5975
CA 43a	360 x 270 x 205	CA 43 as	6610	CA 43a	6610
CA 44	360 x 360 x 170	CA 44 s	7750	CA 44	7750
CA 44a	360 x 360 x 205	CA 44 as	8270	CA 44a	8270
CA 63	540 x 270 x 170	CA 63 s	9560	CA 63	9560
CA 63a	540 x 270 x 205	CA 63 as	10845	CA 63a	10845
CA 64	540 x 360 x 170	CA 64 s	12350	CA 64	12350
CA 64a	540 x 360 x 205	CA 64 as	13415	CA 64a	13415





CA 66	540 x 540 x 170	CA 66 s	18415	CA 66	18415
CA 66a	540 x 540 x 205	CA 66 as	19945	CA 66a	19945
CA 84a	720 x 360 x 205	CA 84 as	17040	CA 84a	17040
CA 86a	720 x 540 x 205	CA 86 as	29540	CA 86a	29540



Enclosure	Dimension in mm (L x B x H)	Part No. (with Hinged Door)	Price (Rs)	Part No. (With Glazed Hinged Door)	Price (Rs)
-----------	-----------------------------	-----------------------------	------------	------------------------------------	------------

Glass Fiber Reinforced Polyester Enclosure with Hinged Door - IP66 IK10 - Outdoor

BRES - 325	300 x 250 x 140	BRES - 325	7710	BRES - 325P	10260
BRES - 43	400 x 300 x 200	BRES - 43	9935	BRES - 43P	13730
BRES - 44	400 x 400 x 200	BRES - 44	11500	BRES - 44P	15670
BRES - 54	500 x 400 x 200	BRES - 54	14015	BRES - 54P	20320
BRES - 64	600 x 400 x 230	BRES - 64	16120	BRES - 64P	22450
BRES - 65	600 x 500 x 230	BRES - 65	18240	BRES - 65P	24330
BRES - 83	800 x 300 x 230	BRES - 83	25700	BRES - 83P	32220
BRES - 86	800 x 600 x 300	BRES - 86	29025	BRES - 86P	36115



Glass Fiber Reinforced Polyester Enclosure with Hinged door & 3 Point Locking - IP66 IK10 - Outdoor

BRES - 43	400 x 300 x 200	BRES - 43 - 3L	13660	BRES - 43P - 3L	24510
BRES - 44	400 x 400 x 200	BRES - 44 - 3L	19235	BRES - 44P - 3L	26780
BRES - 54	500 x 400 x 200	BRES - 54 - 3L	20355	BRES - 54P - 3L	30965
BRES - 64	600 x 400 x 230	BRES - 64 - 3L	25240	BRES - 64P - 3L	35610
BRES - 65	600 x 500 x 230	BRES - 65 - 3L	27405	BRES - 65P - 3L	38110
BRES - 83	800 x 300 x 230	BRES - 83 - 3L	28765	BRES - 83P - 3L	39985
BRES - 86	800 x 600 x 300	BRES - 86 - 3L	31735	BRES - 86P - 3L	59050



Description	Dimension in mm (L x B x H)	Part No.	Price (Rs)
-------------	-----------------------------	----------	------------

Glass Fiber Reinforced Polyester Feeder Pillar with Hinged door - IP55 IK10 - Outdoor

Feeder Pillar - 500 High Enclosure	500 x 500 x 300	ART - 55	37535
Feeder Pillar - 750 High Enclosure	750 x 500 x 300	ART - 75	47760
Feeder Pillar - 1000 High Enclosure	1000 x 500 x 300	ART - 105	63505
Feeder Pillar - 500 High Enclosure	500 x 750 x 300	ART - 57	43640
Feeder Pillar - 750 High Enclosure	750 x 750 x 300	ART - 77	70535
Feeder Pillar - 1000 High Enclosure	1000 x 750 x 300	ART - 107	78980



Floor Mounted Pedestal for Glass Fiber Reinforced Polyester Feeder Pillar - Outdoor

Polyester Pedestal - 500 h	500 x 500 x 300	F0 - 500	24305
Polyester Pedestal - 500 h	500 x 750 x 300	F0 - 750	28055
Polyester Pedestal - 750 h	750 x 500 x 300	F1 - 500	38265
Polyester Pedestal - 750 h	750 x 750 x 300	F1 - 750	47790

Polyester Pedestal - 1000 h	1000 x 500 x 300	F2 - 500	41000
Polyester Pedestal - 1000 h	1000 x 750 x 300	F2 - 750	49635

Description	Part No.	Price (Rs)
-------------	----------	------------

Accessories

Blind lid Full open 2 for CA Enclosure	TC - 02 - cj	1410
Blind lid Full open 3 for CA Enclosure	TC - 03 - cj	1555
Blind lid Full open 4 for CA Enclosure	TC - 04 - cj	1905
Connecting Flange open 2 - for CA	BA - 20 - cj	1240
Connecting Flange open 3 - for CA	BA - 30 - cj	1410
Connecting Flange open 4 - for CA	BA - 40 - cj	1740
Extension Frame CA - 63	RE - 63	26765
Extension Frame CA - 64	RE - 64	29415
Extension Frame CA - 66	RE - 66	40805
External Rigid Hinge 2	bo - BRE - EXT	2555
External Flexible Hinge 2	BFE	UR
Small Ventilation Seal	DV - M	100
Large Ventilation Seal	DV - G	UR
Connecting Flange - for BRES	UA 230 x 100	2250
Connecting Flange - for BRES	UA 350 x 150	2635
Connecting Flange - for BRES	UA 350 x 150 - B	3520
Wall Fastening Lug	OFM - 140	615



Amps	Number of Poles	Ref Hours	Rated Voltage	IP44	Price (Rs)	IP67	Price (Rs)
------	-----------------	-----------	---------------	------	------------	------	------------



Trailing Plug - CEE Type

16A	2P + E	6h	200 - 250 V	013 - 6	385	0132 - 6	950
	3P + E	6h	380 - 415 V	014 - 6	545	0142 - 6	1065
	3P + N + E	6h	380 - 415 V	015 - 6	575	0152 - 6	1180
32A	2P + E	6h	200 - 250 V	023 - 6	705	0232 - 6	1405
	3P + E	6h	380 - 415 V	024 - 6	785	0242 - 6	1535
	3P + N + E	6h	380 - 415 V	025 - 6	820	0252 - 6	1585
63A	2P + E	6h	200 - 250 V	0331 - 6	3650	033 - 6	4145
	3P + E	6h	380 - 415 V	0341 - 6	3775	034 - 6	4200
	3P + N + E	6h	380 - 415 V	0351 - 6	3875	035 - 6	4025
125A	2P + E	6h	200 - 250 V	-	-	043 - 6	12395
	3P + E	6h	380 - 415 V	-	-	044 - 6	12495
	3P + N + E	6h	380 - 415 V	-	-	045 - 6	11075

Trailing Socket - CEE Type



16A	2P + E	6h	200 - 250 V	213 - 6	660	2132 - 6	1535
	3P + E	6h	380 - 415 V	214 - 6	780	2142 - 6	-
	3P + N + E	6h	380 - 415 V	215 - 6	800	2152 - 6	1790
32A	2P + E	6h	200 - 250 V	223 - 6	900	2232 - 6	2045
	3P + E	6h	380 - 415 V	224 - 6	1095	2242 - 6	-
	3P + N + E	6h	380 - 415 V	225 - 6	1110	2252 - 6	2180
63A	2P + E	6h	200 - 250 V	2331 - 6	4600	233 - 6	5495
	3P + E	6h	380 - 415 V	2341 - 6	-	234 - 6	-
	3P + N + E	6h	380 - 415 V	2351 - 6	5290	235 - 6	6175
125A	2P + E	6h	200 - 250 V	-	-	243 - 6	-
	3P + E	6h	380 - 415 V	-	-	244 - 6	-
	3P + N + E	6h	380 - 415 V	-	-	245 - 6	14825

Flush Mounted Panel Socket - Straight - CEE Type



16A	2P + E	6h	200 - 250 V	313 - 6f7	575	3132 - 6	1110
	3P + E	6h	380 - 415 V	314 - 6f7	820	3142 - 6	1180
	3P + N + E	6h	380 - 415 V	315 - 6f7	830	3152 - 6	1215
32A	2P + E	6h	200 - 250 V	323 - 6f7	880	3232 - 6	1490
	3P + E	6h	380 - 415 V	324 - 6f7	1005	3242 - 6	1580
	3P + N + E	6h	380 - 415 V	325 - 6f7	1030	3252 - 6	1645
63A	2P + E	6h	200 - 250 V	3331 - 6	3470	333 - 6	4430
	3P + E	6h	380 - 415 V	3341 - 6	3565	334 - 6	4485
	3P + N + E	6h	380 - 415 V	3351 - 6	3665	335 - 6	4595

Amps	Number Of Poles	Ref Hours	Rated Voltage	IP44	Price (Rs)	IP67	Price (Rs)
125A	2P + E	6h	200 - 250 V	-	-	343-6	13310
	3P + E	6h	380 - 415 V	-	-	344-6	13485
	3P + N +E	6h	380 - 415 V	-	-	345-6	13610



Flush Mounted Panel Socket - Angled - CEE Type

16A	2P + E	6h	200 - 250 V	413 - 6f87	620	4132 - 6f87	1150
	3P + E	6h	380 - 415 V	414 - 6f87	820	4142 - 6f87	1275
	3P + N +E	6h	380 - 415 V	415 - 6f87	830	4152 - 6f87	1215
32A	2P + E	6h	200 - 250 V	423 - 6	880	4232 - 6f78	1535
	3P + E	6h	380 - 415 V	424 - 6	1005	4242 - 6f78	1620
	3P + N +E	6h	380 - 415 V	425 - 6	1030	4252 - 6f78	1685
63A	2P + E	6h	200 - 250 V	4331 - 6	3470	433 - 6	4430
	3P + E	6h	380 - 415 V	4341 - 6	3570	434 - 6	4485
	3P + N +E	6h	380 - 415 V	4351 - 6	3665	435 - 6	4595
125A	2P + E	6h	200 - 250 V	-	-	443 - 6	15310
	3P + E	6h	380 - 415 V	-	-	444 - 6	13485
	3P + N +E	6h	380 - 415 V	-	-	445 - 6	10650



Interlocked Socket - CEE Type

16A	2P + E	6h	200 - 250 V	6113 - 6	7245	61132 - 6	8520
	3P + E	6h	380 - 415 V	6114 - 6	7410	61142 - 6	8605
	3P + N +E	6h	380 - 415 V	6115 - 6	8095	61152 - 6	9375
32A	2P + E	6h	200 - 250 V	6123 - 6	7665	61232 - 6	8945
	3P + E	6h	380 - 415 V	6124 - 6	7805	61242 - 6	9070
	3P + N +E	6h	380 - 415 V	6125 - 6	8520	61252 - 6	9795
63A	2P + E	6h	200 - 250 V	-	-	75332 - 6	23855
	3P + E	6h	380 - 415 V	-	-	75342 - 6	25135
	3P + N +E	6h	380 - 415 V	-	-	75352 - 6	26840
125A	2P + E	6h	200 - 250 V	-	-	9755102	-
	3P + E	6h	380 - 415 V	-	-	9755099	-
	3P + N +E	6h	380 - 415 V	-	-	9755100	96275



Interlocked Socket with DIN-Rail - CEE Type

16A	2P + E	6h	200 - 250 V	7613 - 6	12780	76132 - 6	16185
	3P + E	6h	380 - 415 V	7614 - 6	-	76142 - 6	-
	3P + N +E	6h	380 - 415 V	7615 - 6	13635	76152 - 6	17040
32A	2P + E	6h	200 - 250 V	7623 - 6	15335	76232 - 6	17550
	3P + E	6h	380 - 415 V	7624 - 6	-	76242 - 6	-
	3P + N +E	6h	380 - 415 V	7625 - 6	16185	76252 - 6	17040



Amps	Number Of Poles	Ref Hours	Rated Voltage	IP44	Price (Rs)	IP67	Price (Rs)
Socket with DIN Rail - CEE Type							
16A	2P + E	6h	200 - 250 V	510001	2630	610001	3160
	3P + E	6h	380 - 415 V	510004	-	610004	-
	3P + N + E	6h	380 - 415 V	510006	2840	610006	3610
32A	2P + E	6h	200 - 250 V	510011	2890	610011	3545
	3P + E	6h	380 - 415 V	510014	-	610014	-
	3P + N + E	6h	380 - 415 V	510016	3040	610016	3695



Amps	Number Of Poles	Ref Hours	Rated Voltage	IP44	Price (Rs)	IP67	Price (Rs)
Wall mounted Socket - CEE Type							
16A	2P + E	6h	200 - 250 V	113 - 6	915	1132 - 6	1450
	3P + E	6h	380 - 415 V	114 - 6	-	1142 - 6	-
	3P + N + E	6h	380 - 415 V	115 - 6	1170	1152 - 6	1555
32A	2P + E	6h	200 - 250 V	123 - 6	1220	1232 - 6	1830
	3P + E	6h	380 - 415 V	124 - 6	-	1242 - 6	-
	3P + N + E	6h	380 - 415 V	125 - 6	1370	1252 - 6	1985



Amps	Number Of Poles	Ref Hours	Rated Voltage	IP44	Price (Rs)	IP67	Price (Rs)
Schuko Plug & Socket							
16A	2P + E	-	200 - 250 V	Schuko Socket	-	105-0b	465
		-	200 - 250 V	Schuko Plug	-	02958	255
		-	200 - 250 V	Schuko Rubber Plug	-	0511-s	420
		-	200 - 250 V	Schuko Rubber Connector	-	2510-s	790
		-	200 - 250 V	Schuko Rubber Connector with Cap	-	2511-s	880



Amps	Number Of Poles	Ref Hours	Rated Voltage	IP44	Price (Rs)	IP67	Price (Rs)
Three Way Connector - CEE Type							
16A	2P + E	6h	200 - 250 V	Connector-3way 3x16/3 Plug16/3 6h IP44	-	9432000	5115
		6h	200 - 250 V	Connector-3way 3x16/3 Plug16/3 6h IP67	-	9432001	6815
		6h	200 - 250 V	Connector 3-way 3x16/3 6h IP44	-	9432006	6390
		6h	200 - 250 V	Connector 3-way 3x16/3 6h IP67	-	9432007	8095



Amps	Number Of Poles	Ref Hours	Rated Voltage	IP44	Price (Rs)	IP67	Price (Rs)
Interlocked Socket IP67 - Horizontal - CEE Type							
16A	2P + E	6h	200 - 250 V	25108	3405		
	3P + E	6h	380 - 415 V	25109	3730		
	3P + N + E	6h	380 - 415 V	25110	4090		
32A	2P + E	6h	200 - 250 V	25111	3640		
	3P + E	6h	380 - 415 V	25112	4005		
	3P + N + E	6h	380 - 415 V	25113	4400		



SOCKET DISTRIBUTION BOARDS

Model	Description	Dimension in mm (L x B x H)	Price (Rs)
3950	IP65 SOCKET DB - 6 MODULE - SUITABLE FOR FIXING UPTO 3 SOCKETS (16A OR 32A) WITH 6 MODULE MCB	490 X 125 X 107mm	3270
3951	IP65 SOCKET DB - 8 MODULE - SUITABLE FOR FIXING UPTO 4 SOCKETS (16A OR 32A) WITH 8 MODULE MCB	500 X 230 X 155 mm	5115
3952	IP65 SOCKET DB - 16 MODULE - SUITABLE FOR FIXING UPTO 6 SOCKETS (16A OR 32A) WITH 16 MODULE MCB	500 X 330 X 155 mm	6075
3957	IP65 SOCKET DB - 9 MODULE - SUITABLE FOR FIXING UPTO 2 SOCKETS (16A OR 32A) OR 1 X 63A SOCKET WITH 9 MODULE MCB	245 X 205 X 150 mm	3210
3959	IP65 SOCKET DB - 12 MODULE - SUITABLE FOR FIXING UPTO 4 SOCKETS (16A OR 32A) WITH 12 MODULE MCB	380 X 265 X 155 mm	4625
3964	IP65 MCB DB - 13 MODULE	175 X 330 X 155	4280
3974	IP65 SOCKET DB - 16 MODULE - SUITABLE FOR FIXING UPTO 3 SOCKETS (16A OR 32A) WITH 12 MODULE MCB	330 X 330 X 155 mm	5440
3977	IP65 SOCKET DB - 32 MODULE - SUITABLE FOR FIXING UPTO 6 SOCKETS (16A OR 32A) WITH 12 MODULE MCB	685 X 330 X 155 mm	8930





Program	No of Channels	Power Reserve	Programmable Every	Operating Voltage	Type	Part No.	Price (Rs)
Analogue Time Switches							
Daily	1	200 hours	15 min	230 V AC	SUL 181 d	1810011	6520
	1	3 Days	15 min	230 V AC	SUL 189 s	1890801	11185



Digital Time Switches							
Weekly	1	10 Years	1 Min	230V AC	TR 610 top 3	6100130	8850
	2	10 Years	1 Min	230V AC	TR 612 top 3	6120130	19900

Astronomical Time Switches							
Weekly	1	10 Years	1 Min	230V AC	SELEKTA 170 top 3	1700130	11645
	2	10 Years	1 Min	230V AC	SELEKTA 172 top 3	1720130	17275



Setting Range	Switch On Delay	Sensor Mounting	Protection Rating	Operating Voltage	Type	Part No.	Price (Rs)
Twilight Switches - Analogue							
2 - 50000 Lux	0 - 20 Min	Surface	IP20, Sensor IP55	230V AC	LUNA 110 plus AL	1100900	20670
		Flush	IP20, Sensor IP55	230V AC	LUNA 110 plus EL	1100910	20670

Twilight Switches - Integrated							
5 - 200 Lux	40s	Integrated	IP55	230V AC	LUNA 126 Star E	1260900	7305
2 - 200 Lux	2 - 100s	Integrated	IP55	230V AC	LUNA 127 Star S	1270900	10035
2 - 2000 Lux	2 - 100s	Integrated	IP55	230V AC	LUNA 128 Star	1280700	UR



No of Channels	Setting Range	Switch On Delay	Protection Rating	Operating Voltage	Type	Part No.	Price (Rs)
Twilight Switches - Digital							
1	1 - 99000 Lux	0 - 59 Min	Surface	230V AC	LUNA 111 top 3 AL	1110130	28185
			Flush	230V AC	LUNA 111 top 3 EL	1110230	30740

Detection Angle \ Channel	Detection Range	Light Switch off Delay	Operating Voltage	Type	Part No.	Price (Rs)
Motion Detectors - LUXA Range						
150° / Light	12 m	5 s - 12 min	230 V	theluxa S 150	1010500	5750
180° / Light	12 m	5 s - 12 min	230 V	theluxa S 180	1010505	6190
360° / Light	32 m	5 s - 12 min	230 V	theluxa S 360	1010510	12140



Motion Detectors - Mova Range						
360° / Light	8m	10s - 60 min	230 V	theMova S360 100 AP WH	1030550	13475
360° / Light	8m	10s - 60 min	230 V	theMova S360 100 DE WH	1030560	12255
360° / Light / Presence	8m	10s - 60 min	230 V	theMova S360 101 AP WH	1030555	15575
360° / Light / Presence	8m	10s - 60 min	230 V	theMova S360 101 DE WH	1030565	13830



Presence Detectors						
360° / Light / Presence	6m x 6m	10s - 60 min	230 V	thePrema S 360 - 101 E UP	2070605	34445
360° / Light / Presence	8m	10s - 60 min	230 V	thePassa P360 - 101 UP WH	2010300	47795



SOCKET DISTRIBUTION BOARD									
MODEL	DISCRPTION	STRAIGHT SOCKET				ANGLED SOCKET			
		PART NO - IP44	PRICE (INR)	PART NO - IP67	PRICE (INR)	PART NO - IP44	PRICE (INR)	PART NO - IP67	PRICE (INR)
3957 - 9 MODULE MCB PROVISION	1 X 16A 3P + 1 X 32A 5P	3957 11 16 00 IP44 S	4,935	3957 11 16 00 IP67 S	6,095	3957 11 16 00 IP44 A	4,935	3957 11 16 00 IP67 A	6,095
	1 X 16A 3P + 1 X 16A 5P	3957 11 13 00 IP44 S	4,740	3957 11 13 00 IP67 S	6,010	3957 11 13 00 IP44 A	4,740	3957 11 13 00 IP67 A	6,010
	1 X 32A 3P + 1 X 32A 5P	3957 14 16 00 IP44 S	5,190	3957 14 16 00 IP67 S	6,470	3957 14 16 00 IP44 A	5,190	3957 14 16 00 IP67 A	6,470
	2 X 16A 3P	3957 21 00 00 IP44 S	4,535	3957 21 00 00 IP67 S	5,570	3957 21 00 00 IP44 A	4,535	3957 21 00 00 IP67 A	5,570
	2 X 32A 5P	3957 26 00 00 IP44 S	5,335	3957 26 00 00 IP67 S	6,615	3957 26 00 00 IP44 A	5,335	3957 26 00 00 IP67 A	6,615
3959 - 12 MODULE MCB PROVISION	2 X 16A 3P + 2 X 32A 5P	3959 21 26 00 IP44 S	8,015	3959 21 26 00 IP67 S	10,330	3959 21 26 00 IP44 A	8,015	3959 21 26 00 IP67 A	10,330
	2 X 16A 3P + 2 X 16A 5P	3959 21 23 00 IP44 S	7,620	3959 21 23 00 IP67 S	10,165	3959 21 23 00 IP44 A	7,620	3959 21 23 00 IP67 A	10,165
	2 X 32A 3P + 2 X 32A 5P	3959 24 26 00 IP44 S	8,520	3959 24 26 00 IP67 S	11,080	3959 24 26 00 IP44 A	8,520	3959 24 26 00 IP67 A	11,080
	3 X 16A 3P + 1 X 32A 5P	3959 31 16 00 IP44 S	7,610	3959 31 16 00 IP67 S	9,805	3959 31 16 00 IP44 A	7,610	3959 31 16 00 IP67 A	9,805
	3 X 16A 3P + 1 X 16A 5P	3959 31 13 00 IP44 S	7,415	3959 31 13 00 IP67 S	9,725	3959 31 13 00 IP44 A	7,415	3959 31 13 00 IP67 A	9,725
	4 X 16A 3P	3959 41 00 00 IP44 S	7,210	3959 41 00 00 IP67 S	9,285	3959 41 00 00 IP44 A	7,210	3959 41 00 00 IP67 A	9,285
	4 X 16A 5P	3959 43 00 00 IP44 S	8,030	3959 43 00 00 IP67 S	11,045	3959 43 00 00 IP44 A	8,030	3959 43 00 00 IP67 A	11,045
	4 X 32A 3P	3959 44 00 00 IP44 S	8,230	3959 44 00 00 IP67 S	10,790	3959 44 00 00 IP44 A	8,230	3959 44 00 00 IP67 A	10,790
	2 X 16A 3P + 1 X 32A 5P	3959 21 16 00 IP44 S	7,005	3959 21 16 00 IP67 S	8,680	3959 21 16 00 IP44 A	7,005	3959 21 16 00 IP67 A	8,680
	2 X 16A 3P + 2 X 16A 5P	3959 21 13 00 IP44 S	6,810	3959 21 13 00 IP67 S	8,600	3959 21 13 00 IP44 A	6,810	3959 21 13 00 IP67 A	8,600
	2 X 32A 3P + 1 X 32A 5P	3959 24 16 00 IP44 S	7,515	3959 24 16 00 IP67 S	9,435	3959 24 16 00 IP44 A	7,515	3959 24 16 00 IP67 A	9,435
	2 X 32A 3P + 1 X 16A 5P	3959 24 13 00 IP44 S	7,320	3959 24 13 00 IP67 S	9,350	3959 24 13 00 IP44 A	7,320	3959 24 13 00 IP67 A	9,350
	3 X 16A 3P	3959 31 00 00 IP44 S	6,605	3959 31 00 00 IP67 S	8,160	3959 31 00 00 IP44 A	6,605	3959 31 00 00 IP67 A	8,160
	3 X 32A 3P	3959 34 00 00 IP44 S	6,605	3959 34 00 00 IP67 S	8,160	3959 34 00 00 IP44 A	6,605	3959 34 00 00 IP67 A	8,160
3950 - 6 MODULE MCB PROVISION	3 X 16A 3P	3950 31 00 00 IP44 S	5,205	3950 31 00 00 IP67 S	6,755	3950 31 00 00 IP44 A	5,205	3950 31 00 00 IP67 A	6,755
	3 X 32A 3P	3950 34 00 00 IP44 S	5,965	3950 34 00 00 IP67 S	7,885	3950 34 00 00 IP44 A	5,965	3950 34 00 00 IP67 A	7,885
	2 X 16A 3P + 1 X 32A 5P	3950 21 16 00 IP44 S	5,605	3950 21 16 00 IP67 S	7,280	3950 21 16 00 IP44 A	5,605	3950 21 16 00 IP67 A	7,280
	2 X 16A 3P + 1 X 16A 5P	3950 21 13 00 IP44 S	5,410	3950 21 13 00 IP67 S	7,195	3950 21 13 00 IP44 A	5,410	3950 21 13 00 IP67 A	7,195
	2 X 32A 3P + 1 X 32A 5P	3950 24 16 00 IP44 S	6,110	3950 24 16 00 IP67 S	8,030	3950 24 16 00 IP44 A	6,110	3950 24 16 00 IP67 A	8,030
3952 - 16 MODULE MCB PROVISION	3 X 16A 3P + 3 X 32A 5P	3952 31 36 00 IP44 S	11,125	3952 31 36 00 IP67 S	14,600	3952 31 36 00 IP44 A	11,125	3952 31 36 00 IP67 A	14,600
	4 X 16A 3P + 2 X 32A 5P	3952 41 26 00 IP44 S	10,725	3952 41 26 00 IP67 S	14,080	3952 41 26 00 IP44 A	10,725	3952 41 26 00 IP67 A	14,080
	5 X 16A 3P + 1 X 32A 5P	3952 51 16 00 IP44 S	10,325	3952 51 16 00 IP67 S	13,555	3952 51 16 00 IP44 A	10,325	3952 51 16 00 IP67 A	13,555
	3 X 16A 3P + 3 X 16A 5P	3952 31 33 00 IP44 S	10,540	3952 31 33 00 IP67 S	14,350	3952 31 33 00 IP44 A	10,540	3952 31 33 00 IP67 A	14,350
	4 X 16A 3P + 2 X 16A 5P	3952 41 23 00 IP44 S	10,335	3952 41 23 00 IP67 S	13,910	3952 41 23 00 IP44 A	10,335	3952 41 23 00 IP67 A	13,910
	5 X 16A 3P + 1 X 16A 5P	3932 51 13 00 IP44 S	10,130	3932 51 13 00 IP67 S	13,470	3932 51 13 00 IP44 A	10,130	3932 51 13 00 IP67 A	13,470
	3 X 32A 3P + 3 X 32A 5P	3952 34 36 00 IP44 S	11,890	3952 34 36 00 IP67 S	15,730	3952 34 36 00 IP44 A	11,890	3952 34 36 00 IP67 A	15,730
	4 X 32A 3P + 2 X 32A 5P	3952 44 26 00 IP44 S	11,740	3952 44 26 00 IP67 S	15,585	3952 44 26 00 IP44 A	11,740	3952 44 26 00 IP67 A	15,585
	5 X 32A 3P + 1 X 32A 5P	3952 54 16 00 IP44 S	11,595	3952 54 16 00 IP67 S	15,435	3952 54 16 00 IP44 A	11,595	3952 54 16 00 IP67 A	15,435
	3 X 16A 3P + 2 X 16A 5P + 1 X 32A 5P	3952 31 23 16 IP44 S	10,735	3952 31 23 16 IP67 S	14,435	3952 31 23 16 IP44 A	10,735	3952 31 23 16 IP67 A	14,435
	4 X 16A 3P + 1 X 16A 5P + 1 X 32A 5P	3952 41 13 16 IP44 S	10,530	3952 41 13 16 IP67 S	13,995	3952 41 13 16 IP44 A	10,530	3952 41 13 16 IP67 A	13,995
	6 X 32A 3P	3952 64 00 00 IP44 S	11,450	3952 64 00 00 IP67 S	15,290	3952 64 00 00 IP44 A	11,450	3952 64 00 00 IP67 A	15,290
	6 X 16A 3P	3952 61 00 00 IP44 S	9,925	3952 61 00 00 IP67 S	13,030	3952 61 00 00 IP44 A	9,925	3952 61 00 00 IP67 A	13,030
	3974 - 16 MODULE MCB PROVISION	1 X 16A 3P + 2 X 32A 5P	3974 11 26 00 IP44 S	8,250	3974 11 26 00 IP67 S	10,050	3974 11 26 00 IP44 A	8,250	3974 11 26 00 IP67 A
1 X 16A 3P + 2 X 16A 5P		3974 11 23 00 IP44 S	7,860	3974 11 23 00 IP67 S	9,885	3974 11 23 00 IP44 A	7,860	3974 11 23 00 IP67 A	9,885
3 X 32A 5P		3974 36 00 00 IP44 S	8,650	3974 36 00 00 IP67 S	10,570	3974 36 00 00 IP44 A	8,650	3974 36 00 00 IP67 A	10,570
3 X 16A 5P		3974 33 00 00 IP44 S	8,210	3974 33 00 00 IP67 S	10,130	3974 33 00 00 IP44 A	8,210	3974 33 00 00 IP67 A	10,130
3977 - 32 MODULE MCB PROVISION	6 X 32A 5P	3977 66 00 00 IP44 S	15,285	3977 66 00 00 IP67 S	19,125	3977 66 00 00 IP44 A	15,285	3977 66 00 00 IP67 A	19,125
	6 X 16A 5P	3977 63 00 00 IP44 S	14,110	3977 63 00 00 IP67 S	18,625	3977 63 00 00 IP44 A	14,110	3977 63 00 00 IP67 A	18,625
	3 X 16A 5P + 3 X 32A 5P	3977 33 36 00 IP44 S	14,695	3977 33 36 00 IP67 S	18,875	3977 33 36 00 IP44 A	14,695	3977 33 36 00 IP67 A	18,875
	4 X 16A 5P + 2 X 32A 5P	3977 43 26 00 IP44 S	14,500	3977 43 26 00 IP67 S	18,795	3977 43 26 00 IP44 A	14,500	3977 43 26 00 IP67 A	18,795

*The Above mentioned are some general fast moving combinations - For other combinations please contact us



* Different range of Solid Rubber DB's Available - For more information please contact us



ISOLATOR BOX						
DISCRIPTION	THERMOPLASTIC - IP65			THERMOPLASTIC WEATHERPROOF - IP65		
	PART NO	PRICE		PART NO	PRICE	
16A DP ISOLATOR BOX	CIB001PS	1,990		CIB001PC	2,440	
16A FP ISOLATOR BOX	CIB002PS	2,410		CIB002PC	2,865	
32A DP ISOLATOR BOX	CIB003PS	2,820		CIB003PC	3,400	
32A FP ISOLATOR BOX	CIB004PS	3,535		CIB004PC	4,115	



PUSHBUTTON STATION						
DISCRIPTION	THERMOPLASTIC - IP65			THERMOPLASTIC WEATHERPROOF - IP65		
	PART NO	PRICE		PART NO	PRICE	
EMERGENCY STOP WITH TURN RELEASE	CPB001PS	926		CPB001PC	1,467	
EMERGENCY STOP WITH KEY RELEASE	CPB002PS	1,187		CPB002PC	1,728	
START / EMERGENCY STOP TURN TO RELEASE	CPB003PS	1,487		CPB003PC	1,921	
START / EMERGENCY STOP WITH KEY RELEASE	CPB004PS	1,747		CPB004PC	2,182	
START / STOP	CPB005PS	1,348		CPB005PC	1,782	
FORWARD / REVERSE / STOP	CPB006PS	1,764		CPB006PC	2,357	
START & STOP WITH SELECTOR SWITCH	CPB007PS	2,226		CPB007PC	2,819	



JUNCTION BOX						
DISCRIPTION	THERMOPLASTIC - IP65/IP66			THERMOPLASTIC WEATHERPROOF - IP65/IP66		
	PART NO	PRICE		PART NO	PRICE	
2.5 / 4 Sq mm - 5 Terminal - 93x93x55 mm	CJB001PS	565		CJB001PC	795	
2.5 / 4 Sq mm - 9 Terminal - 93x93x55 mm	CJB002PS	655		CJB002PC	885	
2.5 Sq mm - 16 Terminal - 140 x140x79 mm	CJB003PS	1,365		CJB003PC	1,750	
4 Sq mm - 16 Terminal - 140x140x79 mm	CJB004PS	1,430		CJB004PC	1,815	
6 Sq mm - 5 Terminal - 110x110x67 mm	CJB005PS	1,070		CJB005PC	1,220	
6 Sq mm - 9 Terminal - 140x140x79 mm	CJB006PS	1,285		CJB006PC	1,670	
10 Sq mm - 10 Terminal - 140x140x79 mm	CJB007PS	1,465		CJB007PC	1,850	
16 Sq mm - 5 Terminal - 182x180x111 mm	CJB008PS	2,070		CJB008PC	2,805	
25/35 Sq mm - 5 Terminal - 254x180x111 mm	CJB009PS	2,505		CJB009PC	3,215	
50 Sq mm - 5 Terminal - 360x254x111 mm	CJB010PS	5,300		CJB010PC	5,935	
70 Sq mm - 5 Terminal - 360x254x111 mm	CJB011PS	5,865		CJB011PC	6,505	

*The Above mentioned are some general fast moving combinations - For other combinations please contact us

Our Esteemed Clients....



Terms and Conditions :

- Price : Ex-Works Oragadam
- GST : GST extra as applicable
- Insurance : Goods will get dispatched duly insured
- Freight : Freight to be borne by the customer
- Place of Jurisdiction : Chennai

The above prices are subject to change without notice

CAPE
ELECTRIC

CAPE Electric Pvt Ltd

Plot A-41B, SIPCOT,
Oragadam, Sriperumbudur Taluk,
Kancheepuram District - 602 105,
Tel : 044-7101 8100-10
Fax : 044-7101 8199
Email Id : sales@capeindia.net
Web : www.capeindia.net

